

From Exploration to Exploitation



Potential:
Mineral exploration in Nunavik since 1750's.



Example, Cyril Knight campaigns - 1898 to 1933



Asbestos Hill 1970 -1984



Xstrata Raglan opened 1997

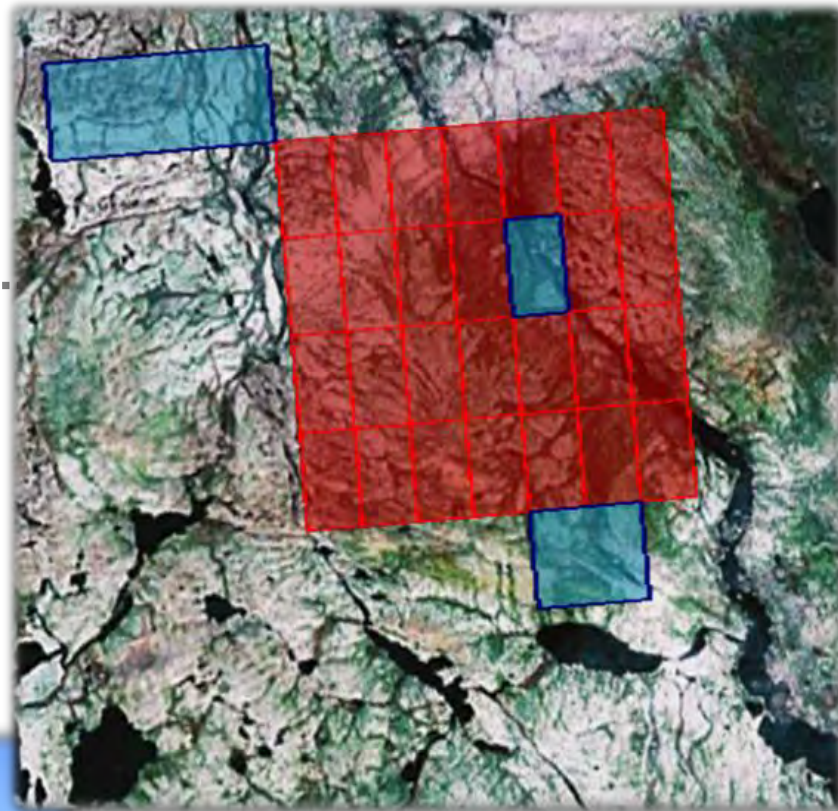
Canadian Royalties early 2013



1

Claims:
Exploration companies apply for claims:

- Via Internet
- 1 claim = 0.45 hectare
- \$98 per claim and exploration companies must do a minimum of exploration work each year

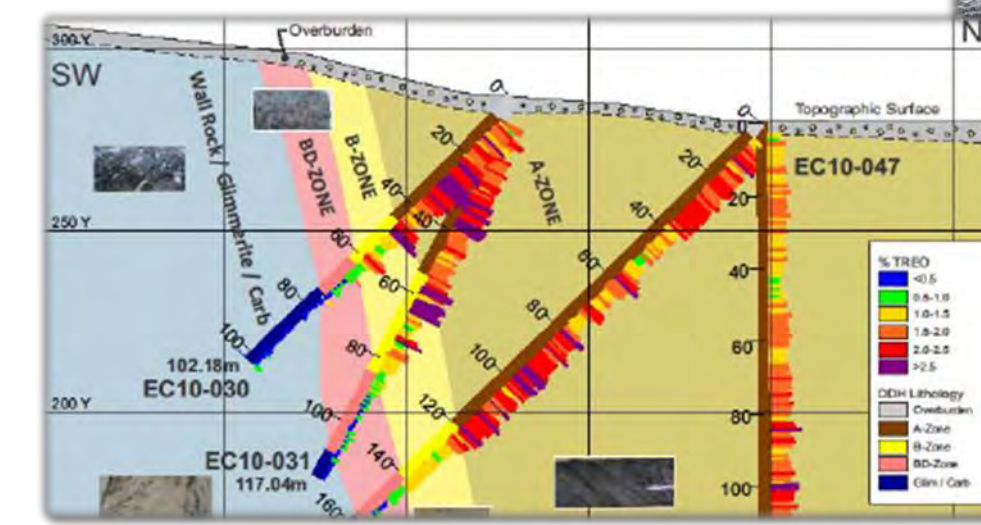


Lots of potential, but many challenges:
After nearly 200 years of exploration, only two mines have opened in Nunavik (Asbestos Hill and Xstrata). Canadian Royalties is scheduled to open in 2013.

2

Exploration:

- Aerial
- Drilling
- Sampling
- Analysis



1: Claims

2: Exploration

10 - 20 years

20 or more years from start of exploration to mine operations

Many steps to develop a project:

- Technical studies
- Feasibility studies
- Detailed design
- Financing

Project development:

- 5 projects currently being developed:
- Eldor: Commerce Corp.
- Hopes Advance Bay: Oceanic
- Kémag: New Millennium
- Lac Oteluk: Adriana
- Strange Lake: Quest Rare Minerals

Start of the impact review process



3



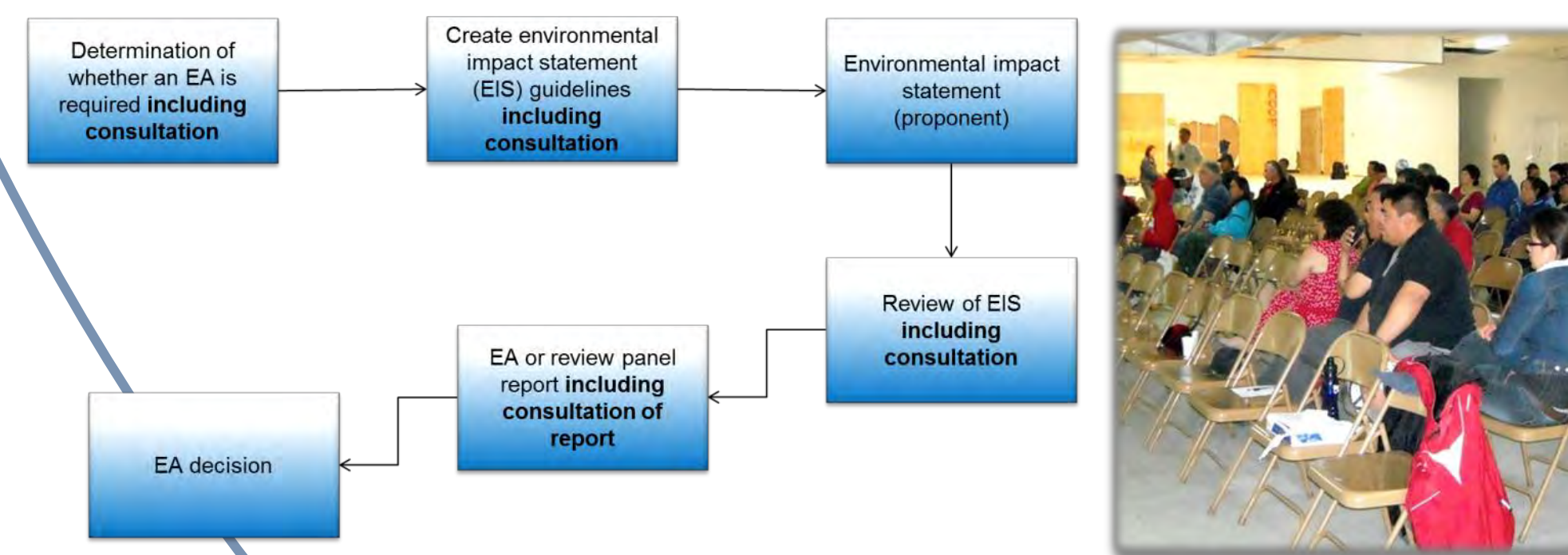
3: Development

5-10 years

Impact assessment and authorizations:

Four different environmental and social impact assessment processes:

- Kativik Environmental Quality Commission
- Federal Environmental and Social Impact Review Panel
- Nunavik Marine Regional Impact Review Board
- Canadian Environmental Assessment Agency



4: Impact assessment and authorizations

3 - 8 years

4

5



Mine operations:

Ongoing monitoring of social, economic and environmental issues



5: Mine operations

25 -100 years

6

Site restoration:

- Long process
- Many challenges

Site restoration
5 - 20+ years

